

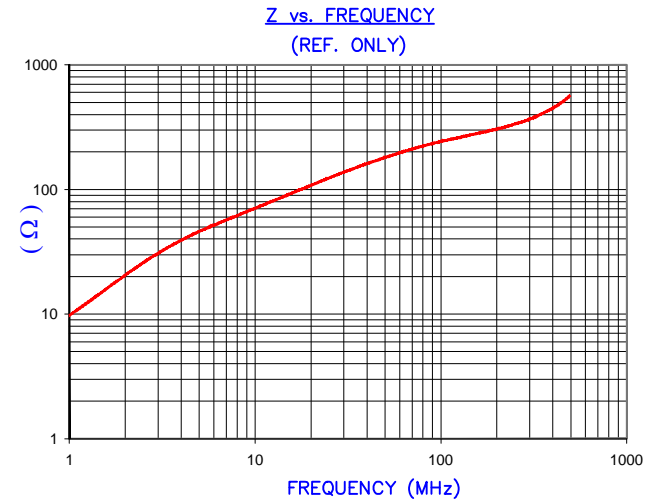
DETAIL "A"  
CHAMFER  
SCALE=5:1

NOTES: UNLESS OTHERWISE SPECIFIED

- PARTS MUST BE TUMBLED, BURNISHED OR DEBURRED TO REMOVE ALL BURRS AND SHARP EDGES.
- COSMETIC SPECIFICATION REFER TO WI-QA-038.

**UNCONTROLLED DOCUMENT**

| IMPEDANCE ( Z ) |        |         |         |
|-----------------|--------|---------|---------|
| Frequency       | 25 MHz | 100 MHz | 300 MHz |
| Nominal (REF)   | 130 Ω  | 245 Ω   | 360 Ω   |
| Minimum         | - Ω    | 196 Ω   | - Ω     |

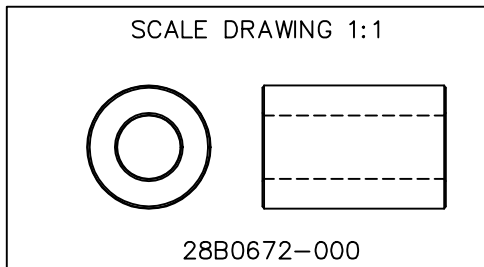


AGILENT E4991A Impedance/Material Analyzer  
HP 16092A Test Fixture

FERRITE CORE DIMENSIONS (SPEC): mm/inches

|   |               |                              |
|---|---------------|------------------------------|
| A | 17.07 [.672]  | +0.25 [.010]<br>-0.36 [.014] |
| B | 8.76 [.345]   | + 0.20 [.008]                |
| C | 25.40 [1.000] | + 0.76 [.030]                |

WEIGHT/1000 21.15 kgs [46.62 Lbs]



| DIMENSIONS ARE IN mm [INCHES]. |  |          |      | This print is the property of Laird Tech. and is loaned in confidence subject to return upon request and with the understanding that no copies shall be made without the written consent of Laird Tech. All rights to design or invention are reserved. |               | <b>Laird</b> |                     |           |
|--------------------------------|--|----------|------|---|---------------|--------------|---------------------|-----------|
| J                              | UPDATE THE LOGO  | 05/13/15 | QIU  | PROJECT/PART NUMBER:  |               | REV          | PART TYPE:          | DRAWN BY: |
| H                              | UPDATE TEMPALTE  | 12/25/09 | Jcai | 28B0672-000   |               | J            | FERRITE<br>CNZ CORE | DJB       |
| G                              | CHANGE NOTE 1, UPDATE PRINT FORMAT<br>UPDATE Z SPECS ADD CURVE | 03/03/03 | JRK  | DATE:   | 05/28/92      | SCALE:       | 2 : 1               | MATERIAL: |
| F                              | UPDATE FORMAT ADD KGS TO WEIGHT<br>UPDATE Z SPECS              | 05/02/02 | JRK  | CAD #   | 28B0672-000-J | TOOL #       | B0672               | FERRITE   |
| REV                            | DESCRIPTION  | DATE     | INT  |   |               |              |                     |           |